

## Land Rover installation steps

Suitable: 10-16 Range Rover Discovery 4

Range Rover Sport 10-13 models

1. Remove front stainless steel trim strip with warping tool



2. After removing. It would be like that:



3. Remove the air conditioning knob module



4. Remove the right and left outlet trim panels as required

It may need you takes a little effort



5. Remove the original central control screen



6. Behind the original central control screen is the car's main unit, need to use screw to take the main unit and the screen apart



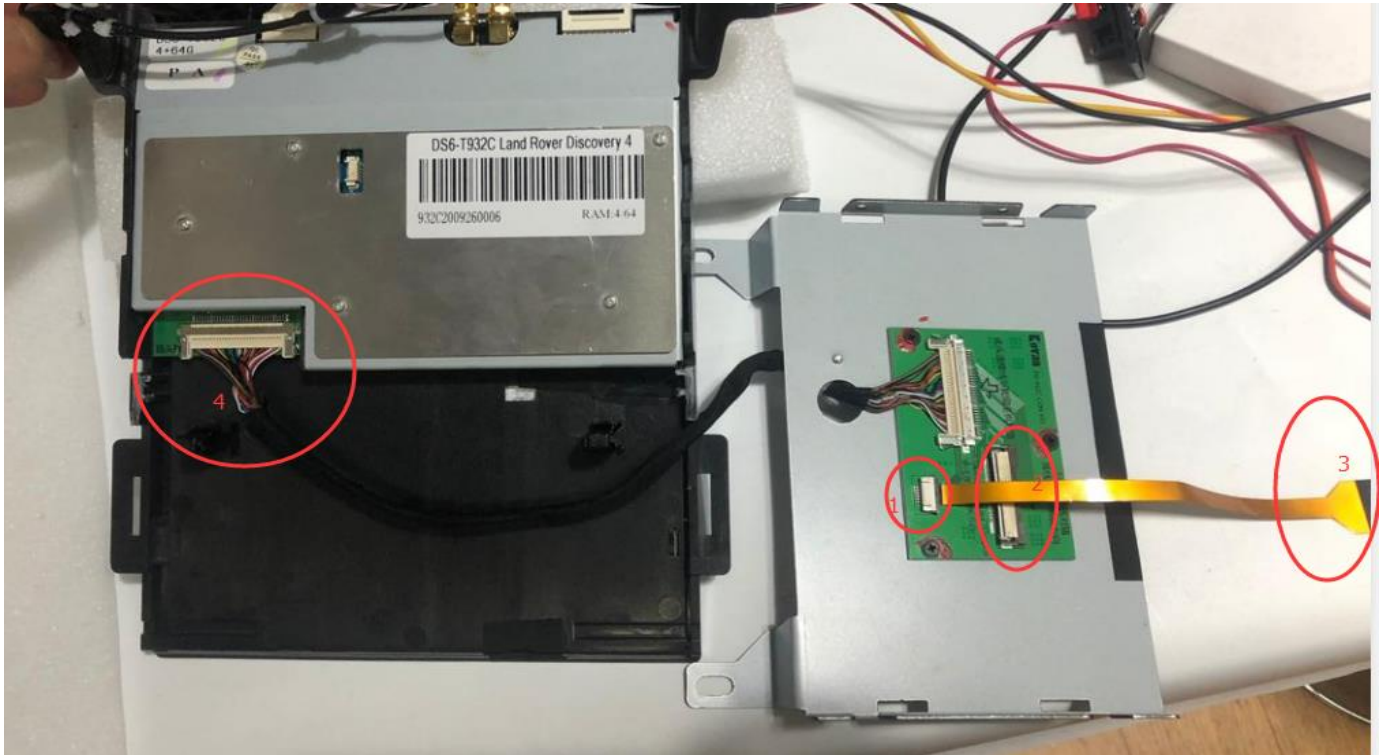
7. Remove the original car screen + rear panel + wiring as shown in the picture please be careful with those steps. Note that those three parts are not necessary



8. Take out the main unit of the radio + matching wiring which bought from us, connect the wires as the picture shows , please noted those 2 parts with red circle Must be removed, otherwise it is easy to cause short circuit

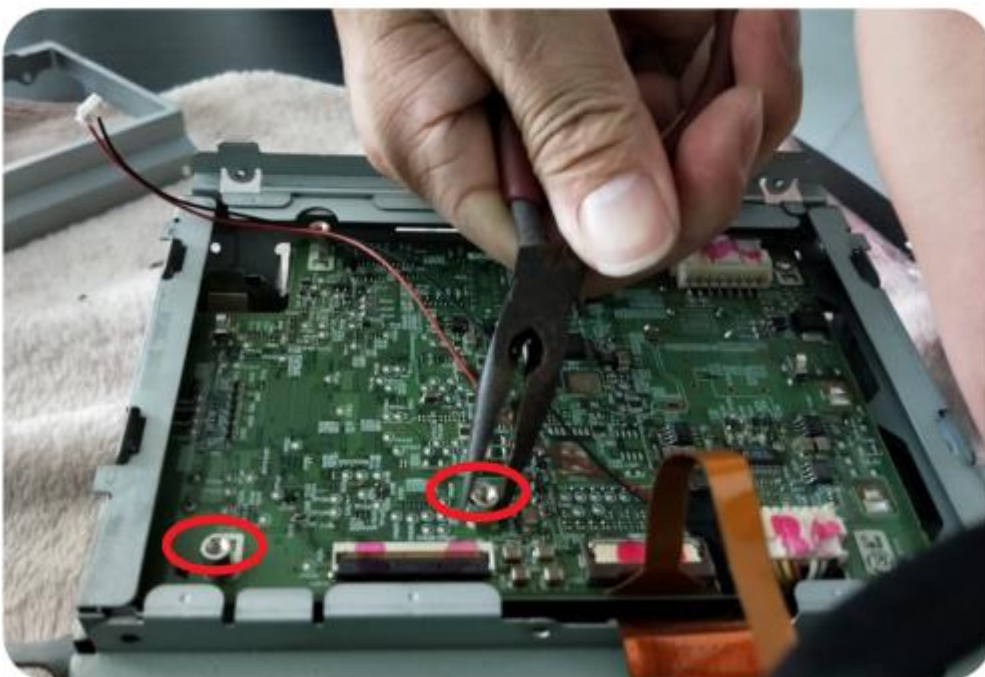
Please noted this green panel which marked with red arrows is not needed , it would be replaced from ours



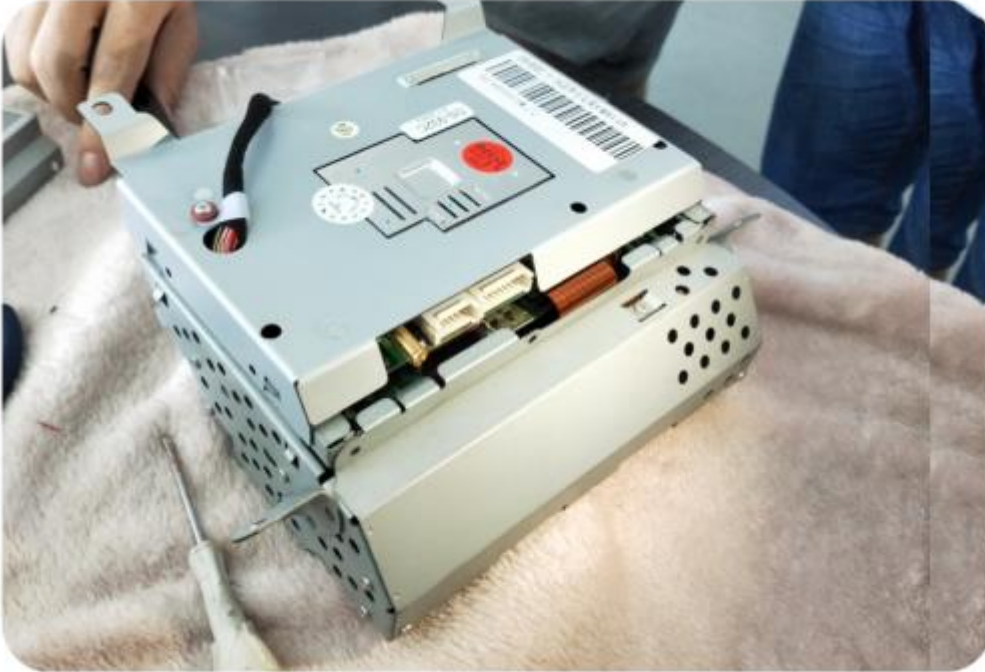


Use This golden wires from us, one head connect the place marked 1 , the other head marked 3 connect your car's dashboard, the wire marked 5 connect the place marked 2

9. Remove these two fixing screws to close the main engine



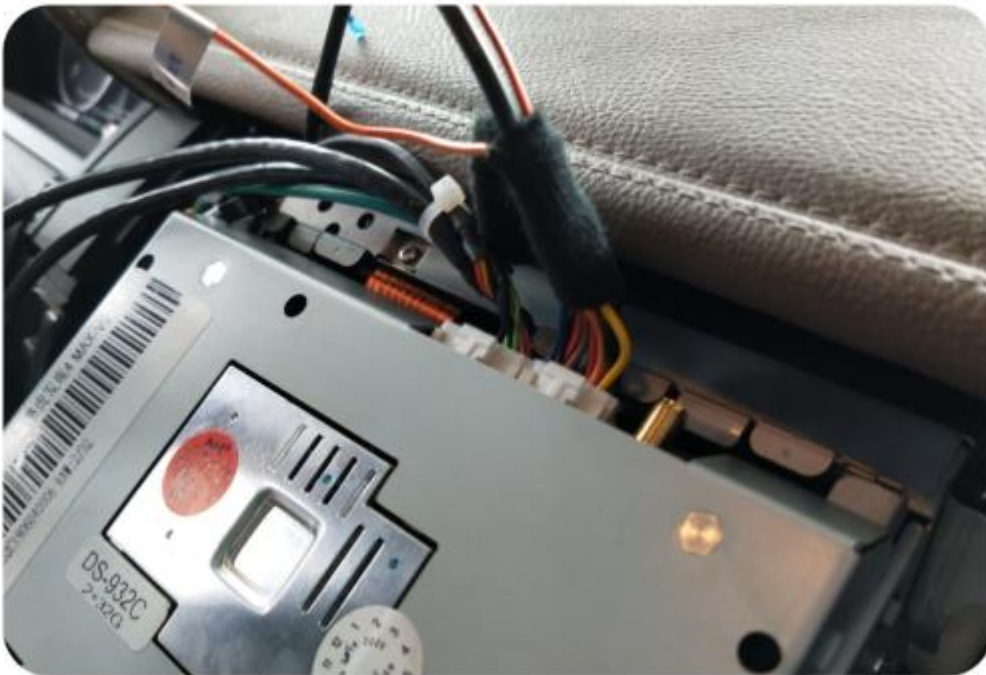
10. Install and fix the main engine of our company and the original engine of the car  
The good screws are shown in the figure



11. Plug in the original car in turn (the same as the original car connection ways )



12. plug in the power cord supplied by our company 1 by 1 in turn



13. Connect our company vertically with the line on our main machine  
The socket behind the screen, as shown in the figure





14. plugged in the 3.5mm audio extended cable in the power cord AUX outlet of the rear air outlet



15. Before recovery, please start the car and light our radio up to test whether the vertical screen has all positive all function well





16. After you light up the screen, you need to set it up  
Then there original speaker will work. click "central control  
/ Portable Audio/AUX"



17 . After the test all functions work normal, fix the host  
Machine/main unit, the red circle below the main engine fixed with screws, the one above  
doesn't need fix



18. After you've fixed the screen, screw it in

Screw in the red circle position, then restore the left and right sides plate in turn



19. Install as shown in the figure (the original car operating system)



20. Done and it looks like great

