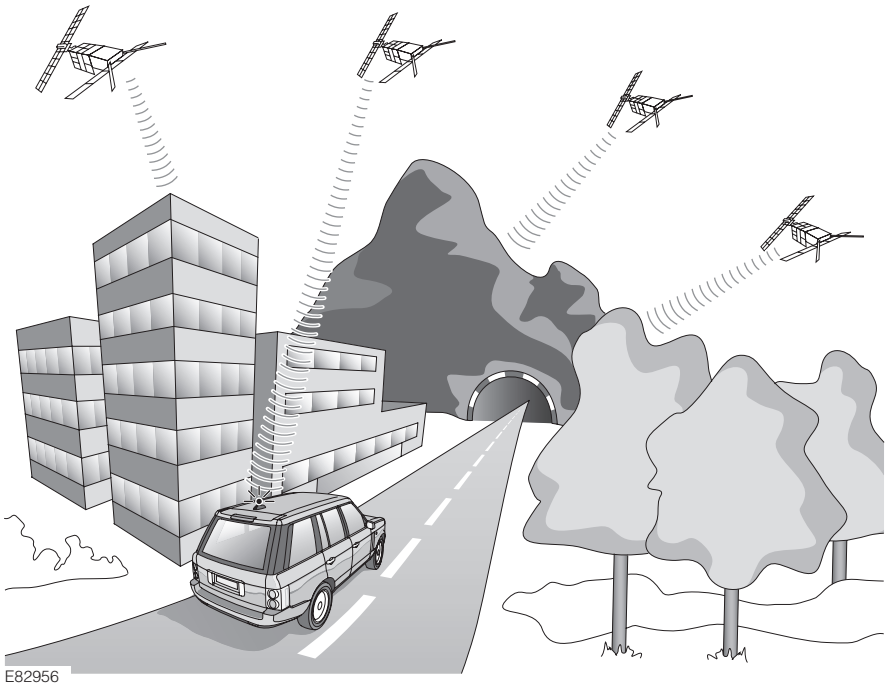


Satellite radio

SATELLITE DIGITAL RADIO



Satellite radio is a satellite based, direct broadcast radio service, which provides digitally encoded audio signals. The signals can be received directly by a suitable receiver or relayed to a receiver via a repeater station, when the receiver is shielded from the satellite's signal.

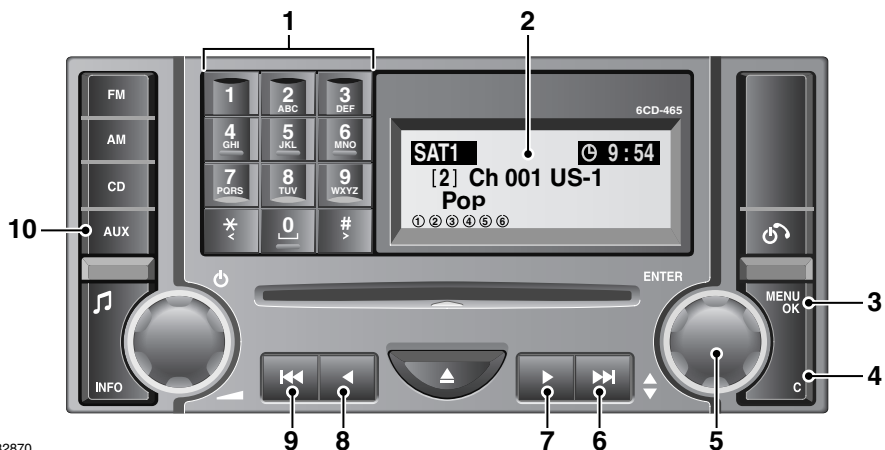
Satellite radio broadcasts a digital signal that is able to provide an audio output with the same sound quality and clarity of CD playback.

Note: *Because the signals are encoded, a subscription to a satellite radio service provider (Sirius) is required to receive satellite radio broadcasts. See **SATELLITE RADIO SUBSCRIPTION** (page 284).*

Satellite radio signals travel in a straight line between the transmitter and the receiver. You may experience some instances where tall buildings, overhead obstacles or when travelling through tunnels that either a poor or no radio reception is received.

Satellite radio

SATELLITE RADIO CONTROLS



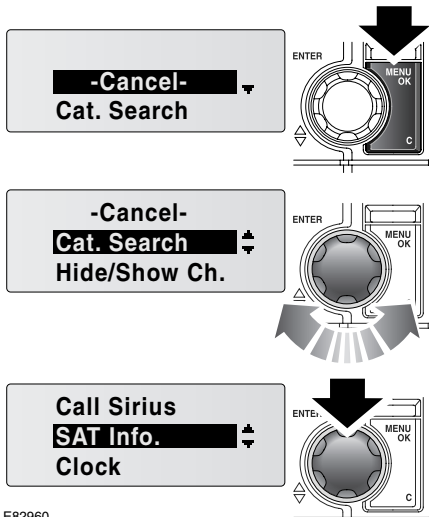
E82870

- 1.** Preset store and recall, PIN entry and direct channel entry keypad.
- 2.** Information display screen.
- 3. MENU OK.** Press to access satellite radio menu.
- 4.** Cancel. Press to exit a menu or clear an entry.
- 5.** Menu control. Rotate to scroll through a menu, press to select menu item.
- 6.** Automatic search up. Press to scroll to the next satellite channel category.
- 7.** Manual search up. Press and release to scroll to the next satellite channel. Press and hold to scroll through all available channels.
- 8.** Manual search down. Press and release to scroll to the previous satellite channel. Press and hold to scroll through all available channels.
- 9.** Automatic search Down. Press to scroll to the previous satellite channel.
- 10. AUX.** Press and release to select the next available source (**AUX**, **SAT1** or **SAT2**).

Satellite radio

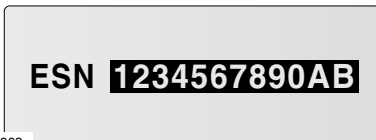
SATELLITE RADIO SUBSCRIPTION

Satellite radio is a subscription service. In order to activate and use the satellite radio, you will need to call the satellite radio service provider and provide them with the Electronic Serial Number (ESN) of the audio unit fitted to your vehicle.



E82960

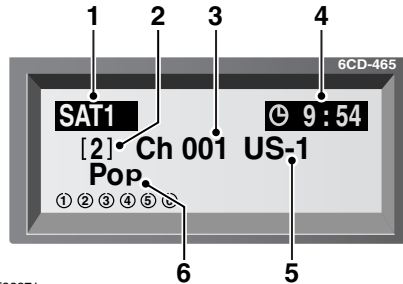
To obtain the ESN, press the **MENU** button and rotate the menu control to scroll to **SAT Info.** Press the menu control to accept the selection.



E82963

The telephone number for satellite radio service provider (Sirius) is held within the menu information and can be found under **Call Sirius**. This number can be used to contact Sirius for subscription changes, service information etc.

SATELLITE RADIO DISPLAY



E82871

1. Satellite source indicator.
2. Preset number for current channel.
3. Channel number.
4. Clock.
5. Channel name.
6. Channel category (or track title/artist).

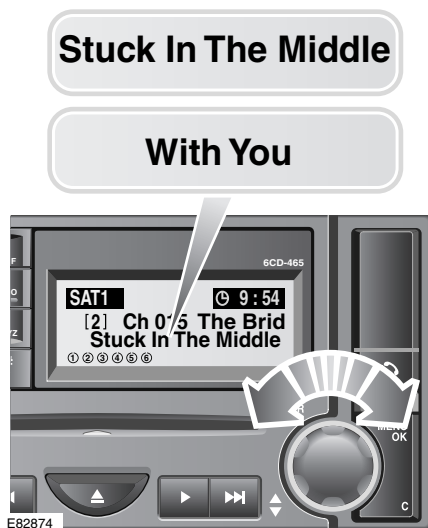
Satellite radio



Once a satellite channel is being received, the abbreviated Channel Name and Category Name (e.g. Rock/Pop/Country) or Program Information (Artist name and song/program title) appears in the bottom line of the audio unit display. See **RECEIVING SATELLITE RADIO BROADCASTS** (page 286).

To toggle through the Category Name and Program Information, press and release the menu control the necessary number of times until the desired information is displayed.

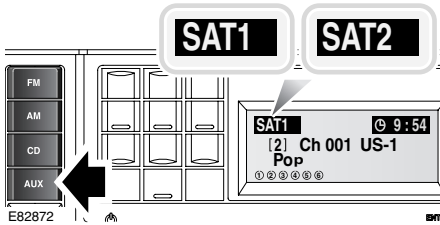
Extended display screens



If the program/song title exceeds the 20 character limit on the display, the remaining characters are displayed on a second screen. Rotate the menu control to toggle between the two screens.

Satellite radio

RECEIVING SATELLITE RADIO BROADCASTS

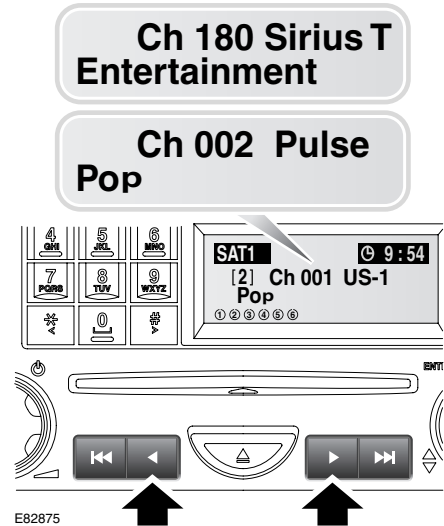


To receive satellite broadcasts, with radio mode active, press and release the **AUX** button (arrowed) the necessary number of times until either **SAT1** or **SAT2** appears in the top left corner of the audio unit display. Radio playback defaults to the last selected satellite channel on that satellite source.

Note: The two satellite sources (**SAT1** and **SAT2**) are identical, but have separate preset store facilities, allowing up to 18 different satellite channels (nine on each source) to be stored as presets.

To return the source to Auxiliary, press and release the **AUX** button the necessary number of times until **AUX** appears in the top left corner of the display.

Selecting a channel



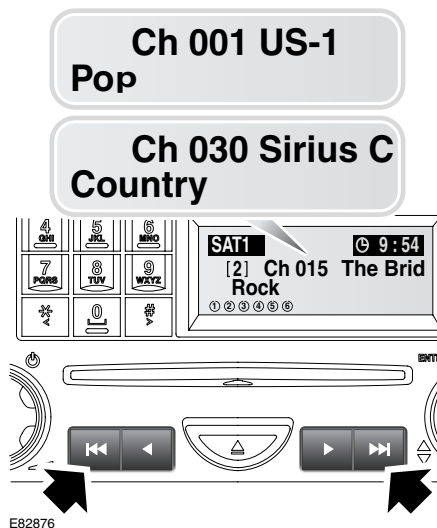
Search through the available satellite channels, by using either of the manual search buttons (arrowed). Press and release the manual search up (>) button to tune to the next channel, or the manual search down (<) button to tune to the previous channel.

To scroll up or down through the channels, press and hold the relevant Manual search button. The scroll stops when the button is released and the currently displayed channel is selected.

Note: All hidden and invalid channels are automatically skipped when using the manual search buttons to select a channel.

Satellite radio

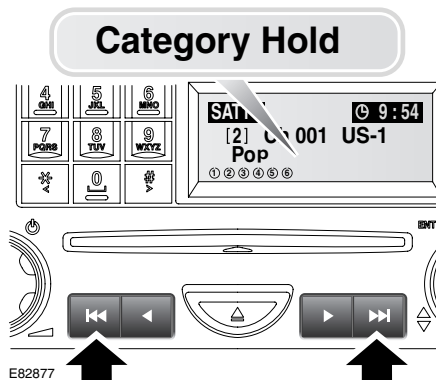
Selecting a category



To change the satellite radio category (Rock/Pop/Country etc.), press and release either the automatic search up (>>) or automatic search down (<<) button (arrowed) to tune to the next, or previous category respectively.

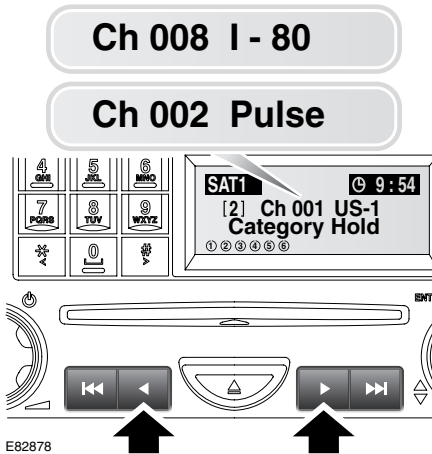
When a new category is selected for the first time, the first channel within that category is selected. Subsequently, the system will always default to the last selected channel within each category (even if the channel is hidden).

Selecting a channel within a set category



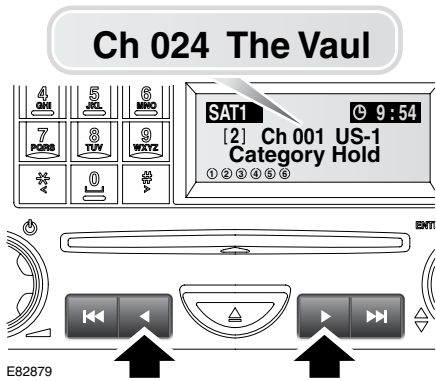
Having selected a category, press and hold either of the automatic search buttons (arrowed) for approximately two seconds, until **Category Hold** appears in the display. If no channel is selected within 30 seconds the category hold feature will reset. Selecting a pre-set channel or changing the audio source will cancel category hold.

Satellite radio



Search through the available satellite channels within the selected category, by using either of the manual search buttons (arrowed).

Press and release the manual search up (>) button to tune to the next channel, or the manual search down (<) button to tune to the previous channel.



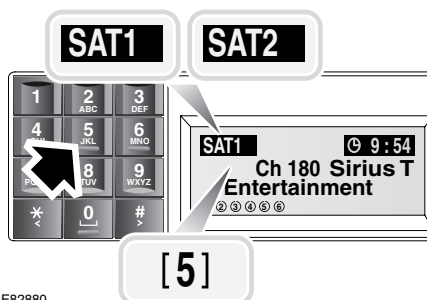
To scroll up or down through the channels, press and hold the relevant manual search button (arrowed). The scroll stops when the button is released and the currently displayed channel is selected.

Note: All hidden and invalid channels are automatically skipped when using the manual search buttons to select a channel.

If all channels in the selected category are hidden, then channel selection using the manual search buttons is not possible.

Satellite radio

Storing channels as presets



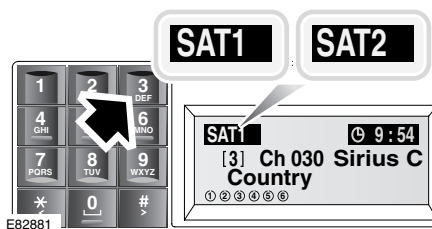
E82880

It is possible to store a total of 18 channels (nine each on **SAT1** and **SAT2**) on the preset buttons (1-9).

Tune into the channel that is to be stored, then press and hold the desired preset button for approximately two seconds. Audio output is muted while the channel is being stored and returns once the operation is complete.

Repeat to store up to 17 other satellite channels.

Recalling a preset channel

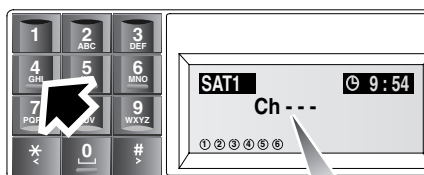
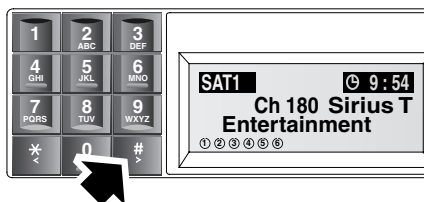


E82881

Select the appropriate source (**SAT1** or **SAT2**) where the desired channel is located.

Press and release the relevant preset button. Audio output will switch to the satellite channel stored on the selected preset.

Direct channel entry



Ch 0--

Ch 024



6CD-465

Ch 024
Invalid Channel

E82882

If the number of the satellite channel is known, channel selection can be achieved by entering the number directly, using the numeric keypad.

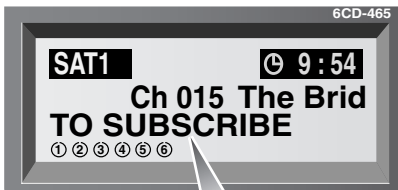
Satellite radio

Press the # key to activate direct channel entry, then enter the three digit channel number by pressing and releasing the corresponding numeric keys. The system will remain tuned to the current channel until all three digits of the channel number are entered.

If no keys are pressed within a three second period during direct channel entry, the display will return to the standard satellite radio display.

If an invalid channel number is entered, **Invalid Channel** is displayed for a short period before the display returns to the standard satellite radio display.

Unsubscribed channels



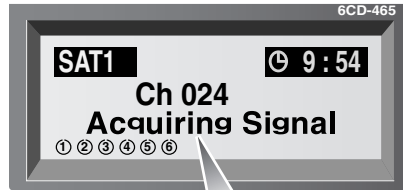
E82883

**Ch 015 The Brid
CALL 888-539-SIRIUS**

If a channel is selected for which there is no valid subscription, **TO SUBSCRIBE** is displayed, followed after three seconds by the contact number and name of the broadcast operator. Select an alternative channel or subscribe to the selected channel.

Signal availability

If the signal for the currently selected channel is lost, or if the system takes time to tune to a selected channel, **Acquiring Signal** will flash in the display. The system is functioning normally during this period, and it is attempting to lock onto a signal.



E82884

**Ch 024
No Service**

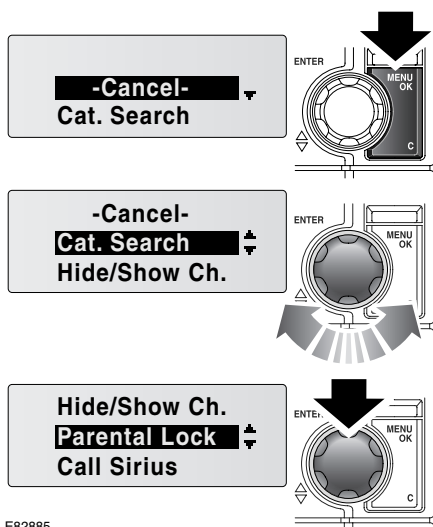
If, after approximately 20 seconds, a signal has still not been received, **No Service** is displayed and another channel should be selected.

Service interruption can be caused by physical blocking of the signal. This may be due to tall buildings, trees or other obstacles blocking the 'line of sight' to the satellite. There may be a problem with that station or the service provider updating stations.

Should such a problem occur try to tune to another station. If it is not possible to tune to other stations, turn the starter switch off for two minutes, then try again.

Satellite radio

SATELLITE RADIO MENU FUNCTIONS



E82885

The satellite radio menu can be accessed while either **SAT1** or **SAT2** are the active source, by briefly pressing the **MENU OK** button.

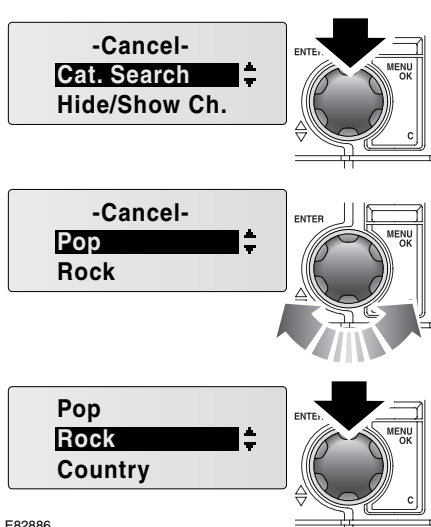
Rotate the menu control to scroll through the menu and highlight the chosen entry. Turn the control clockwise to scroll down through the menu and counterclockwise to scroll up.

Once the desired entry is highlighted in the display, press the menu control to select.

Note: If there is no user action for approximately 10 seconds, the system will exit the menu and the previous screen will be displayed.

The menu can be exited manually at any time by either pressing the Cancel (**C**) button, or by highlighting and selecting the **Cancel** entry in the menu.

Category search



E82886

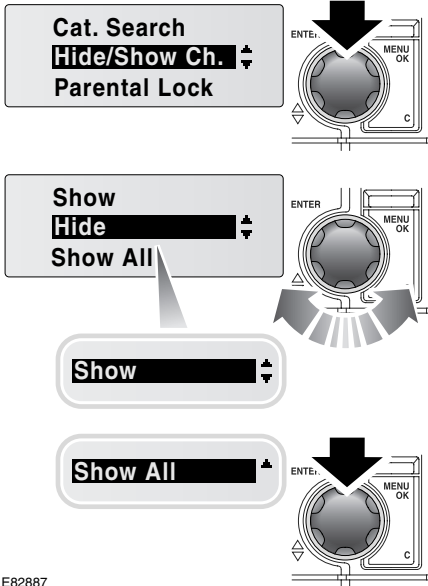
Access the satellite radio menu as described previously. Rotate the menu control to scroll through the menu until **Cat. Search** is highlighted and press the menu control to select.

Rotate the menu control to scroll through the category menu until the desired entry is highlighted, then press the menu control to select.

The first channel in that category will be selected automatically and playback will commence.

Satellite radio

Hiding/showing a channel



E82887

It is possible to hide satellite channels, so that when the channel search buttons are used, the channel is skipped. Hidden channels can be selected by direct channel entry only.

Hiding a channel:

- Tune the audio unit into the relevant channel, then access the satellite radio menu, as described previously.
- Rotate the menu control to scroll through the menu until **Hide/Show Ch.** is highlighted, then press the control to select.
- Scroll through the Hide/Show menu until **Hide** is highlighted, then press the menu control to select. The current channel will now be hidden.

Showing a channel:

- Tune into the relevant channel, then follow the procedure above, but highlight and select **Show** from the menu. The channel can now be selected using the channel search buttons.

Showing all channels:

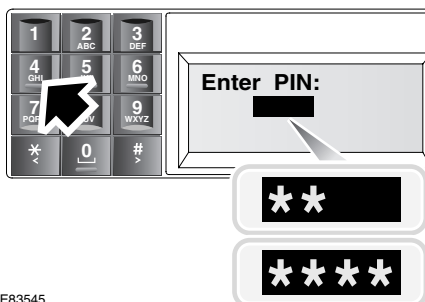
- Follow the procedure above (this can be done with the system tuned into any satellite channel), then highlight and select **Show All** from the menu. The hidden function is removed from all channels on that source (**SAT1** or **SAT2**).

Tuning to a hidden channel:

- A hidden channel can be selected using voice or a pre-set number (if programmed). Alternatively input the channel's frequency directly.

Satellite radio

Parental lock



E83545

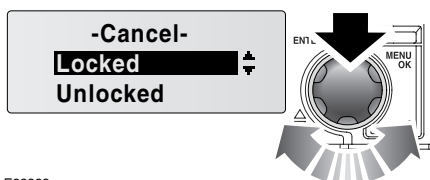
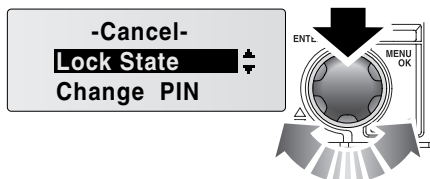
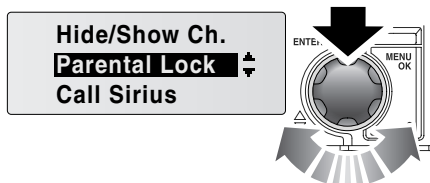
Access to satellite channels can be restricted, using the parental lock facility. A Personal Identification Number (PIN) will then be needed to access the channel.

Note: *The default PIN is 1111. As this information is listed in this book, it is recommended that the PIN be changed. Information on changing the PIN, is given later in this section.*

Locking or unlocking a channel

Tune the system to the satellite channel to be locked/unlocked, then access the satellite radio menu as described previously.

Note: *If you are unlocking a locked channel, the correct PIN will need to be entered when tuning into the channel.*



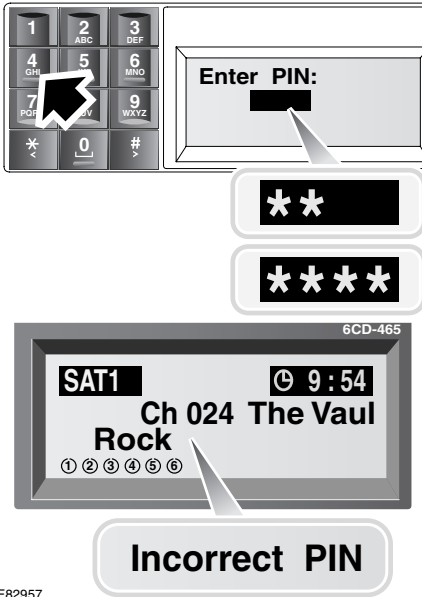
E82889

- Rotate the menu control to scroll through the menu until **Parental Lock** is highlighted, then press the control to select.
- Rotate the menu control to scroll through the menu until **Lock State** is highlighted, then press the control to select.
- Rotate the menu control to scroll through the Lock State menu until either **Locked** or **Unlocked** is highlighted (as appropriate), then press the control to select.

The channel is now locked and will require a PIN to be accessed, or is unlocked and will require no PIN, dependent on which action was undertaken.

Satellite radio

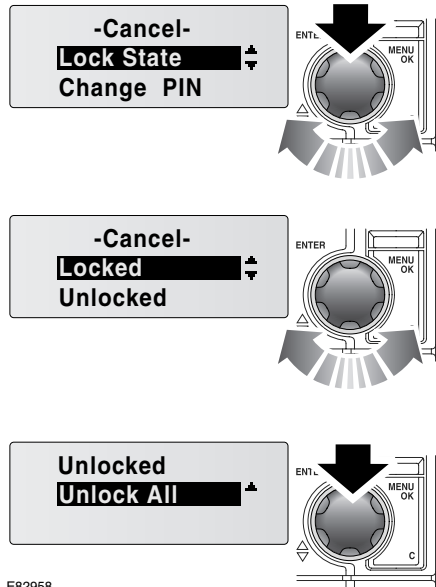
Accessing a locked channel:



E82957

- If a locked channel is selected, **Enter PIN** appears in the audio unit display.
- Use the numerical keypad to enter the correct PIN. If an incorrect digit is entered, press the Cancel (**C**) button to delete the digit.
- Once the correct PIN has been entered press the menu control to accept the number.
- If the correct PIN is entered, the channel is selected and playback commences.
- If an incorrect PIN is entered, **Incorrect PIN** is displayed, followed after a short delay by the PIN entry screen. Re-enter the PIN.

Unlocking all locked channels:



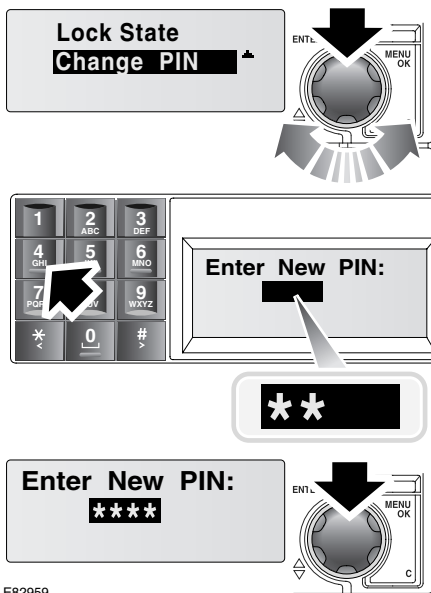
E82958

- Access the Lock State menu.
- Rotate the menu control to scroll through the menu until **Unlock All** is highlighted, then press the control to select. All previously locked channels are now unlocked and will not require a PIN when selected.

Note: If your PIN is lost or forgotten please contact a Land Rover Dealer.

Satellite radio

Changing the parental lock PIN:



E82959

- Access the satellite radio menu, as described previously, then rotate the menu control to scroll through the menu until Parental Lock is highlighted. Press the control to select.
- Rotate the menu control to scroll through the menu until **Change PIN** is highlighted, then press the control to select.
- **Enter New PIN** is displayed. Use the numeric keypad to enter a new 4-digit PIN, then press the menu control to confirm. The system will return to the previously selected channel and the PIN is now reset.