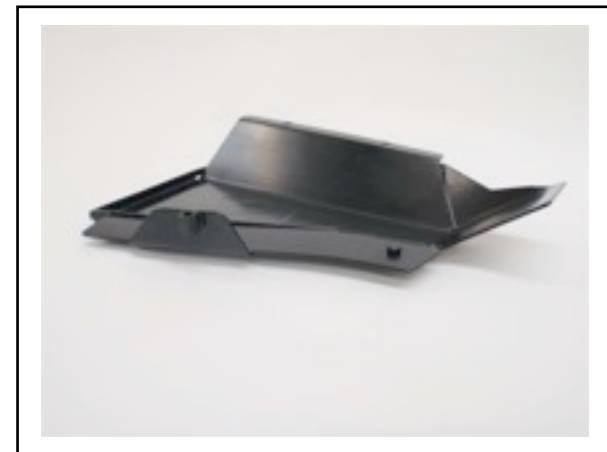




ProSpeed Off Road

Discovery 3 & 4 Compressor Guard



Discovery 3 & 4 Compressor Guard

Kit Contents:

- 2x M8 countersunk bolts
- 2x flush fit washer
- 1x M10 caphead

Tools Required:

- Trim removal tools
- Pry bar or hammer and punch
- No. 2 pozi drive - Stubby screw driver or 90 deg ratchet
- 5mm allen key
- 8mm allen key

If you are also fitting the ProSpeed Off Road rock sliders you must fit those first.

You will then notice some of the following instructions can be ignored as you will have already covered them.

1. Remove 2x number 2 pozi screws from the rear of the plastic sill. (no.2 pozi drive)



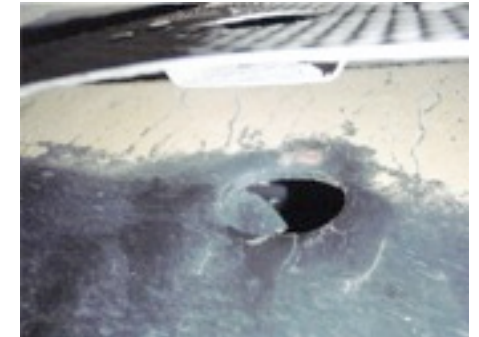
2. Remove the 7 trim clips from the underside of the plastic sill. (trim removal tools)



3. Starting at the rear of the sill, prise it away from the vehicle. Once removed trim to suit.



4. Find the hole on the inside of the chassis leg.



5. With a suitable bar bend the internal tang out of the way of the hole.
6. With the M10 caphead loosely fitted in the compressor guard adjustable clamp, hook the compressor guard into the hole on the chassis leg (picture above) and pivot it back up towards the sill.
7. Fasten up 2x M8 countersunk bolts (5mm allen key). Use the load spreading washers provided.
8. Tighten the M10 caphead to secure the guard.

