

Land Rover Discovery III



Euro NCAP Category
LARGE OFF-ROADER

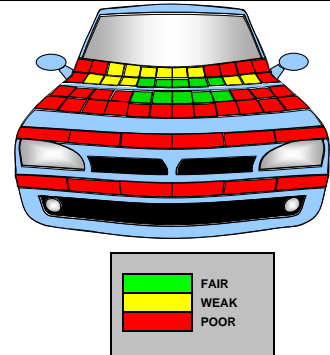
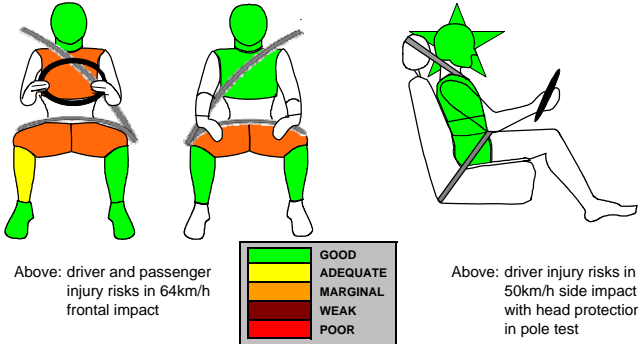


TEST RATINGS

ADULT OCCUPANT PROTECTION	SCORES:	FRONT	11 (69%)
★★★★☆		SIDE	18 (100%)
		SEATBELT REMINDER	2
		OVERALL	31
CHILD OCCUPANT PROTECTION	SCORE:		39 (80%)
★★★★☆			
PEDESTRIAN PROTECTION	SCORE:		8 (22%)
★☆☆☆☆			

ADULT OCCUPANT PROTECTION

PEDESTRIAN PROTECTION



TEST RESULTS IN FULL

FRONTAL IMPACT HEAD	
Driver airbag contact	stable
Passenger airbag contact	stable
Steering Wheel	
rearward displacement	none
upward displacement	none
lateral displacement	11mm to the right
FRONTAL IMPACT CHEST	
Contact with steering wheel	none
Screen pillar rearward	11mm
Passenger compartment integrity	stable
FRONTAL IMPACT UPPER LEGS, KNEES AND PELVIS	
Stiffer structures present	yes: steering column locking mechanism; column adjuster lever; glove-box lid.
Concentrated knee loading	yes: steering column locking mechanism; column adjuster lever; glove-box lid.
FRONTAL IMPACT LOWER LEGS, FEET AND ANKLES	
Rearward pedal displacement	accelerator - 44mm
Upward pedal displacement	brake - 5mm
Footwell rupture	none
SIDE IMPACT AIRBAGS	
Head protection airbag	yes
Torso protection airbag	yes
CHILD PROTECTION	
Restraints used	
18 month old	Britax-Römer BabySafe ISOFIX Plus, rearward-facing using support frame fitted to ISOFIX anchorages
3 year old	Britax-Römer Duo Plus, forward-facing using ISOFIX anchorages and top-tether
CHILD RESTRAINTS FRONTAL IMPACT	
Airbag disabling/warning label	Non-permanent pictogram at end of facia; pictogram-only label on sun-visors
Forward head movement	
18 mth old (behind passenger)	protected
3 year old (behind driver)	protected
Chest Protection	
18 mth old: total load	good
vertical load	good
3-year-old: total load	fair
vertical load	good
CHILD RESTRAINTS SIDE IMPACT	
Head protection	
18 mth old (struck side)	protected
3 year old (non-struck side)	protected
Head acceleration	
18 mth old	good
3 year old	good

CAR TESTED



Make, model and hand of drive	Landrover Discovery III, 2.7 V6 diesel SE, LHD
Body type[†]	5 door, 5-seat SUV
Model year	2006
Kerb Weight	2637kg
Chassis number from which Euro NCAP rating applies	404930
Safety Equipment	Driver and passenger dual-stage frontal airbags; side impact airbags; head-protecting curtain airbags; front seatbelt pre-tensioners and load-limiters; ISOFIX and top-tether anchorages in second row outboard seats; front seatbelt reminder system; ABS, Brake-Assist, Stability Control.
	[†] The Discovery III is available as a 5-seat and a 7-seat vehicle



Land Rover Discovery III

COMMENTS

FRONTAL IMPACT	Structures in the dashboard presented a potential risk to the knees of both driver and passenger.
SIDE IMPACT	The Discovery III scored maximum points for its performance in the side impact and pole tests.
CHILD PROTECTION	The passenger airbag could be deactivated to allow rearward-facing child restraints to be used in the front passenger seat. However, the information regarding the status of the airbag was not sufficiently clear to meet Euro NCAP's requirements. The presence of ISOFIX anchorages in the rear outboard seats was not clearly marked.
SEATBELT REMINDER	The Discovery III has a seatbelt reminder system for the front seats only. The system met Euro NCAP's requirements.
PEDESTRIAN PROTECTION	The bumper and the leading edge of the bonnet scored no points for the protection they offered to pedestrians.

Euro NCAP's rating applies fully only to the model with the specifications detailed here. Some equipment may not be fitted as standard to all versions in all countries. You should ensure that your car is fitted with the safety equipment you require.



www.euroncap.com